

TOPO Explorer/Triton

Exporting TOPO Explorer maps to
your Magellan Triton

Before you start

TOPO Explorer

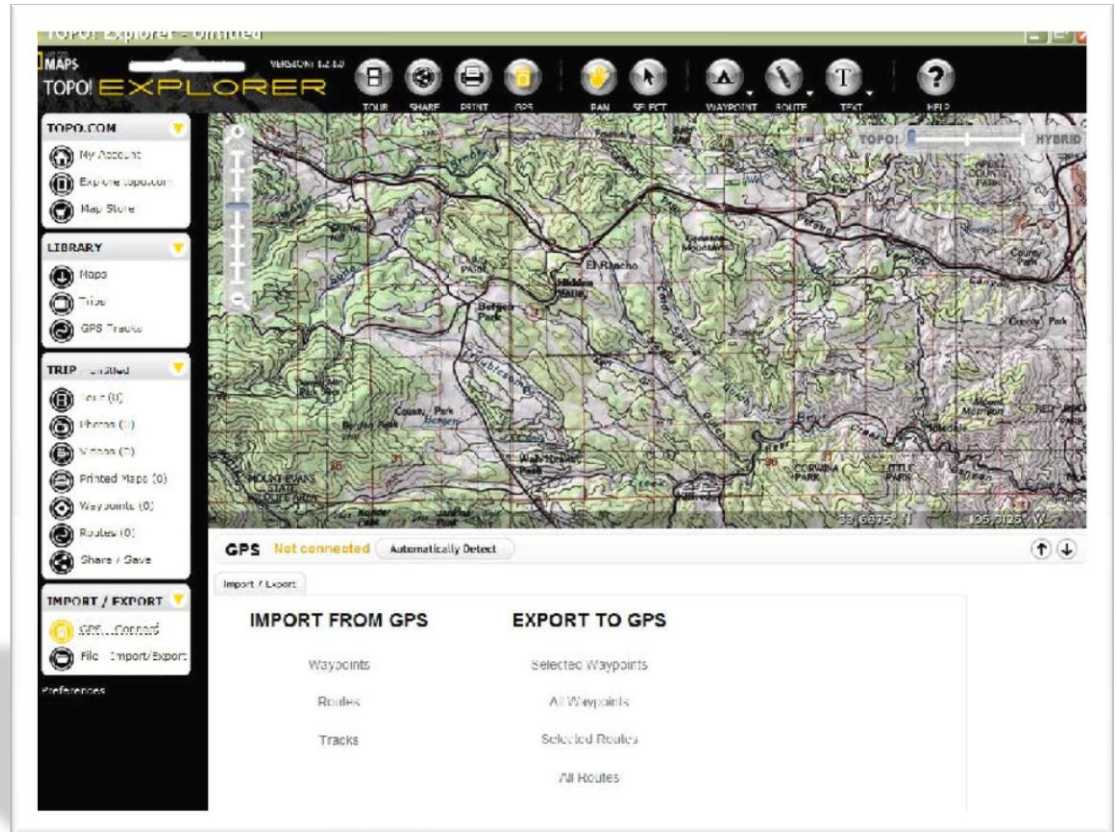
- Make sure your system meets the minimum requirements for the program to operate properly.
- More info at > http://wiki.natgeomaps.com/wiki/TOPO_Explorer#System_Requirements

Magellan Triton

- Ensure it has the most recent firmware
- Compatible SD card installed (400/500, 1500/2000) with enough available space for the selected map
- The Vantage Point program can not be open on your pc

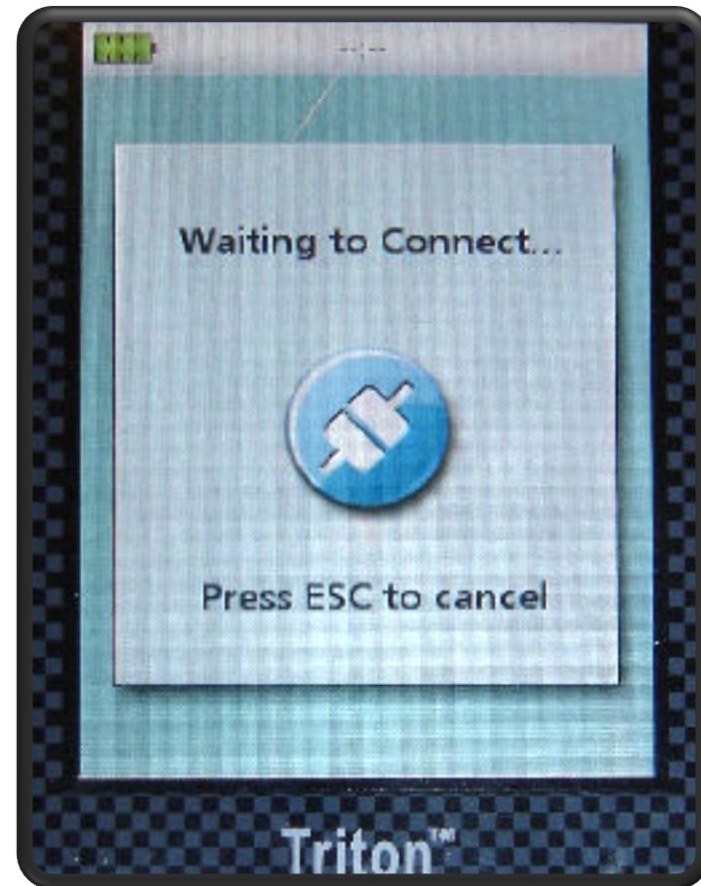
TOPO Explorer application

- ✓ Open the program and login
- ✓ Pan in to the map area you are wanting to export
- ✓ Select the GPS-Connect button from the left bar or GPS button on the top bar



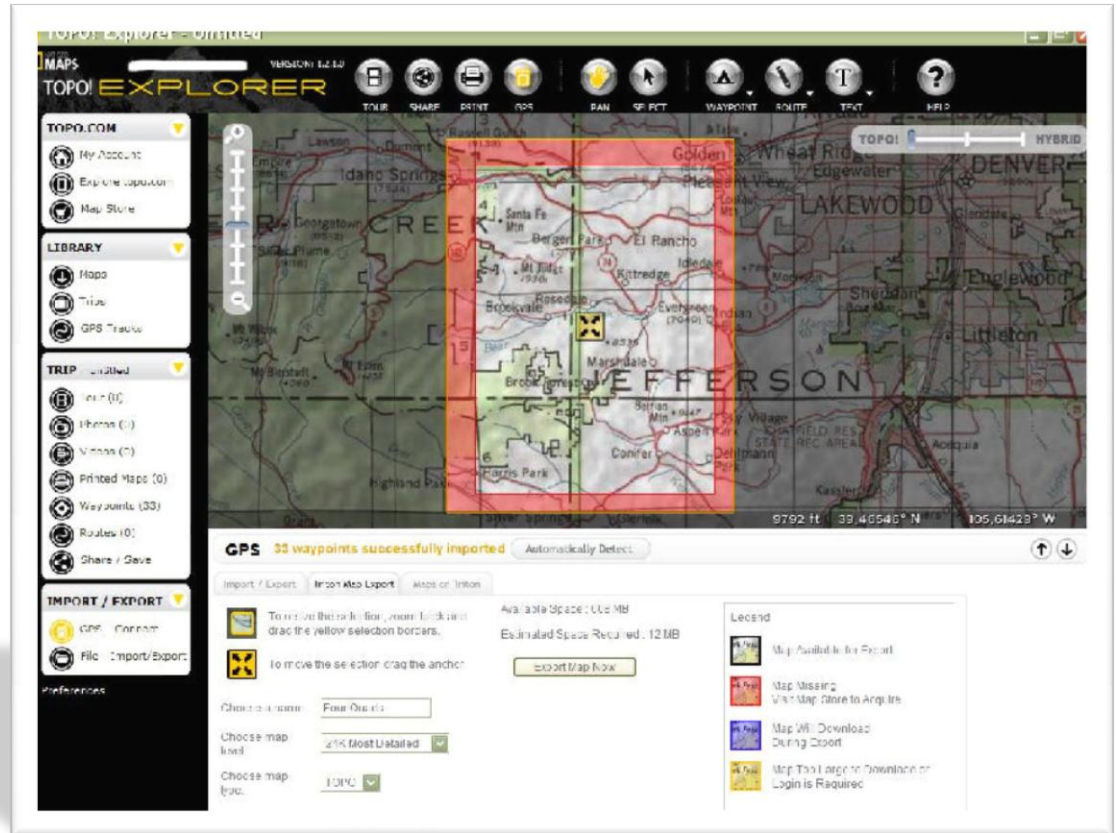
Connect your Triton

- ✓ Connect and power on
- ✓ The Triton screen should pop up with connect options. Select “Connect to PC”
- ✓ It will then show “Waiting to Connect”



Select the Area and Type of Map to Export

- ✓ Drag the bounding box edges to the size you want. It works somewhat different than a crop box because it has pre-set size boundaries.
- ✓ Drag the entire box to relocate by placing the cursor inside the box.
- ✓ There is currently a size limit of 250 MB that can be exported at one time. This shows in the lower export pane and will increase/decrease as you change the map size and/or detail level.
- ✓ Create a name for your map area.
- ✓ Select the detail level you want to export. 1:24,000>1:100,000>Both levels
- ✓ Select the type of image; Topo, Aerial, or Hybrid



Export Map

- ✓ The only map images that will be exported are the 100K and 24K of the areas that you own that are in the selected bounding box. You can select either detail level or both. Atlas and region images do not transfer.
- ✓ The shaded areas of the map screen will not transfer. Only the clear view areas in the box.
- ✓ You do not have to be zoomed in to the closest level before export
- ✓ Hit the “Export Map Now” button
- ✓ TOPO Explorer will briefly communicate with the Triton to check available space on the unit.
- ✓ Compiling the map will start progress
- ✓ Do not disturb the program or the gps



“Connected to PC”

TOPO Explorer will start the map export at **84%**

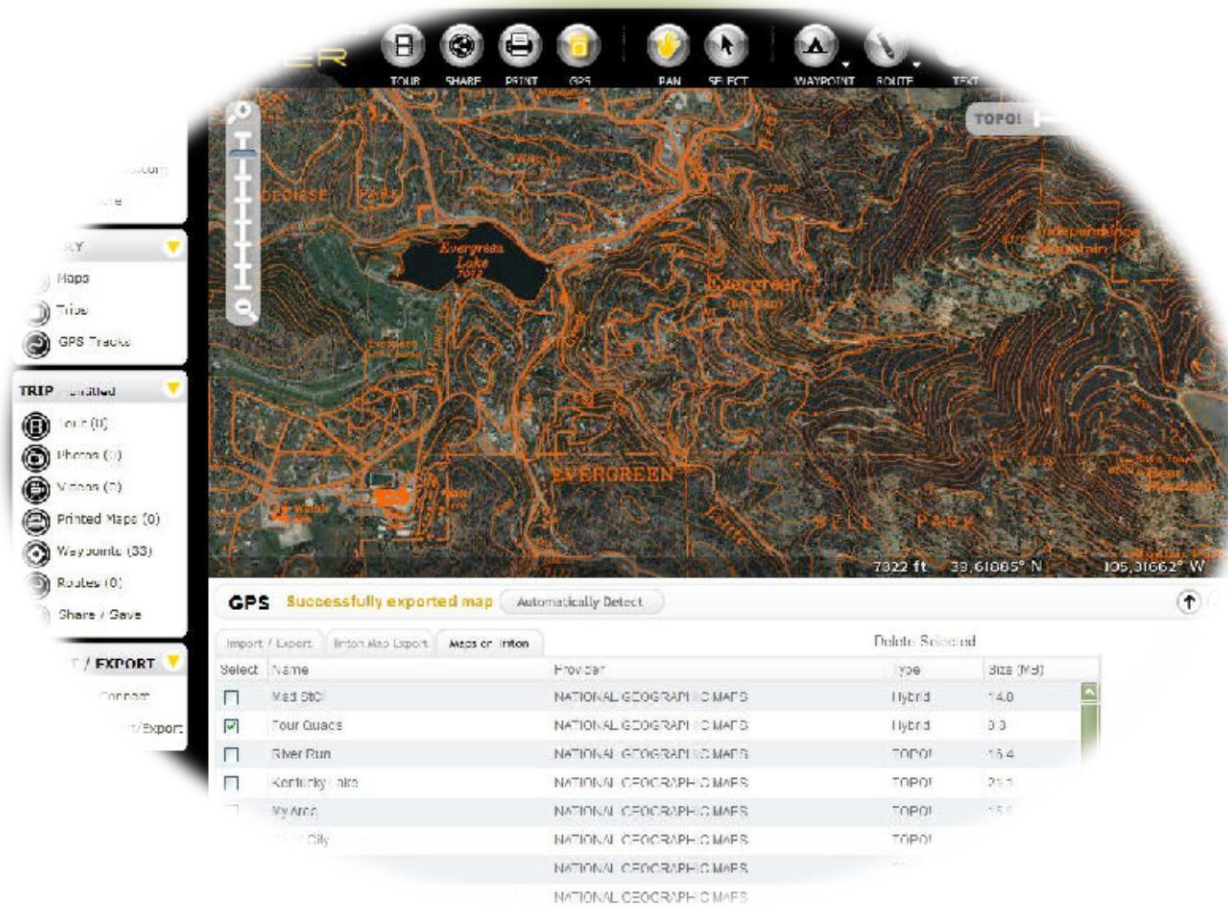
Triton will show “Connected to PC” at this time until the export is 100%



“Successfully Exported Map”

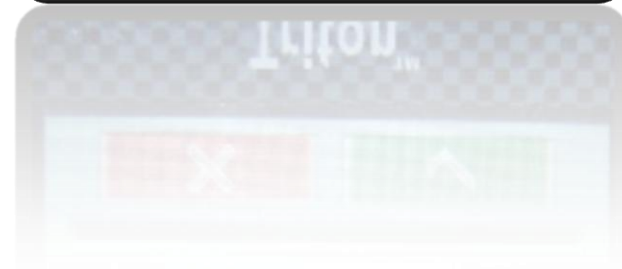
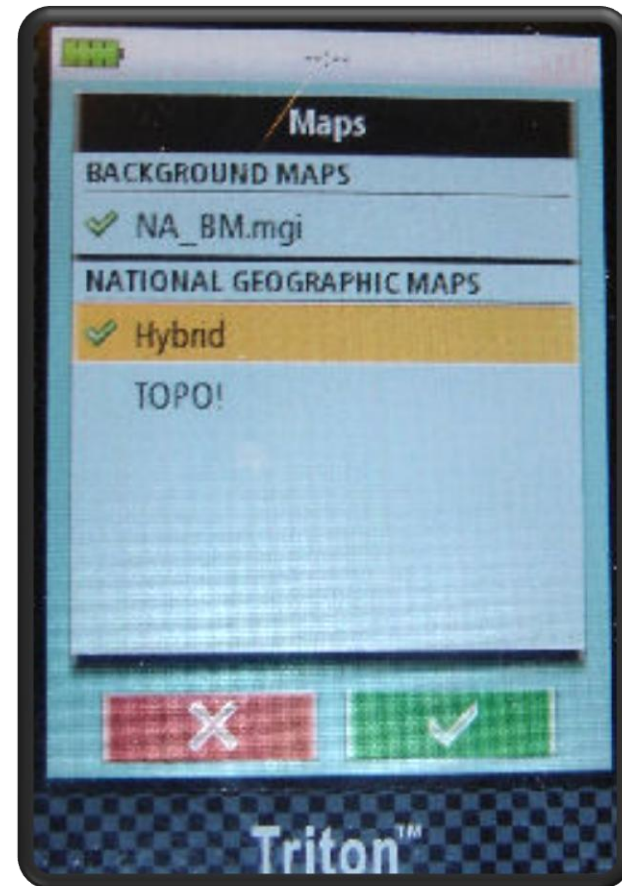
The “Maps on Triton” tab will show all maps that are on the sd card

You can delete maps from the device here, but you cannot import/export to other programs



Selecting and viewing maps on the Triton

- ✓ Click on Menu>View>Maps
- ✓ The maps will be listed under “National Geographic Maps”
- ✓ Scroll down to the type you want and select
- ✓ TOPO, Aerial, and Hybrid will be the only three listed under the NG maps if you have exported these types to the unit
- ✓ Your individual map names will not be listed here. All maps that you have exported of that type will be active when you select one of the three categories.
- ✓ Continue to scroll down to the green check mark and select it
- ✓ Navigate to the area of your map and zoom in.
- ✓ The detail map will come into view at ¼ mile down to 300’



Zoom in to view

